

From Building towards Landscape
Erich Mendelsohn and a Reconstitution of Geographical Forms, 1919-1929

7 Illustrations

Figure 01: Herman Kosel, *Die neue Bauform*

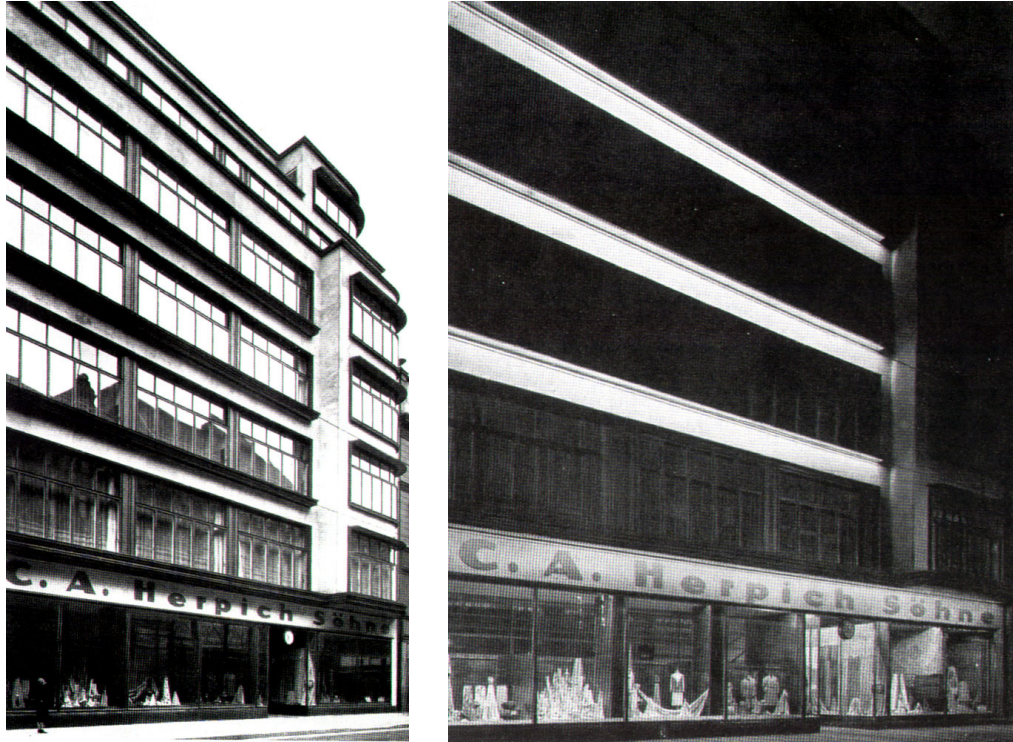


Source: Universitäts-Bibliothek Heidelberg:
<http://diglit.ub.uni-heidelberg.de/diglit/ulk1927/0282> &
<http://diglit.ub.uni-heidelberg.de/diglit/ulk1927/0283>

From Building towards Landscape

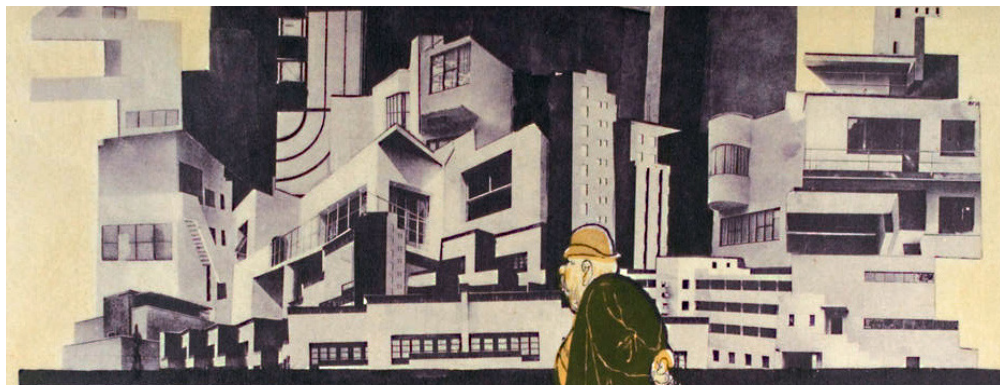
Erich Mendelsohn and a Reconstitution of Geographical Forms, 1919-1929

Figure 02: Mendelsohn, *C.A. Herpich Sons Façade* (Day and Evening)



Source: Mendelsohn (1992), 104 and 106

Figure 03: Kosel, *Die neue Bauform* (Detail)



Source: Universitäts-Bibliothek Heidelberg:
<http://diglit.ub.uni-heidelberg.de/diglit/ulk1927/0283>

From Building towards Landscape

Erich Mendelsohn and a Reconstitution of Geographical Forms, 1919-1929

Figure 04: Mendelsohn, *Imaginary Project* (1917)



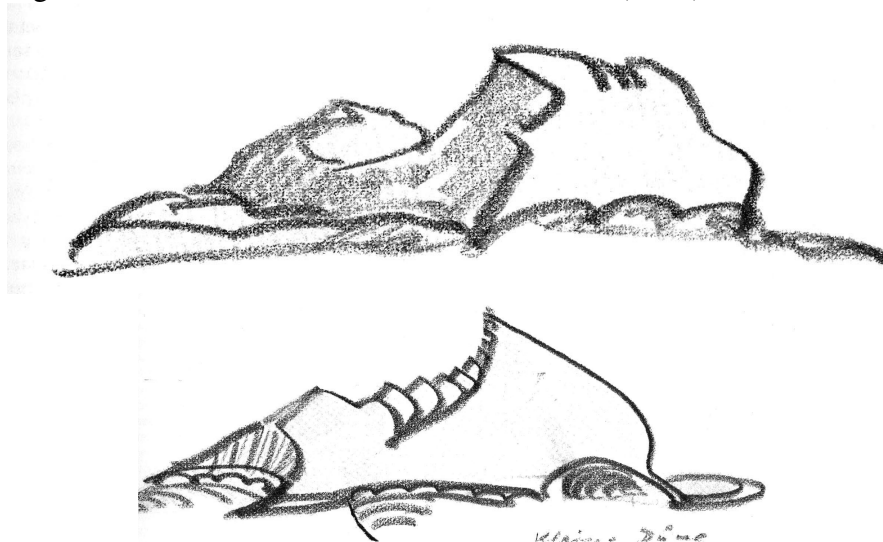
Source: Zevi (1999), 42.

Figure 05: Mendelsohn, *Schocken Department Store in Stuttgart* (1926-1928)



Source: Zevi (1999), 145.

Figure 06: Mendelsohn, *Dune Architecture* (1920)

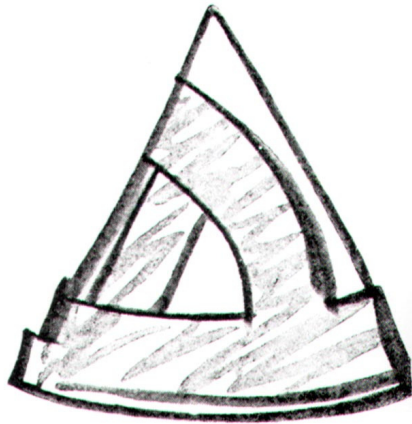


Source: King (1969), 31 and 33.

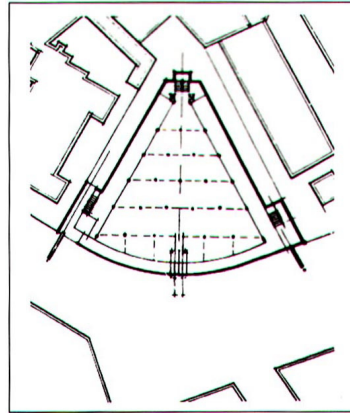
From Building towards Landscape

Erich Mendelsohn and a Reconstitution of Geographical Forms, 1919-1929

Figure 07: Mendelsohn, *Schocken Department Store in Chemnitz* (1928-1929)



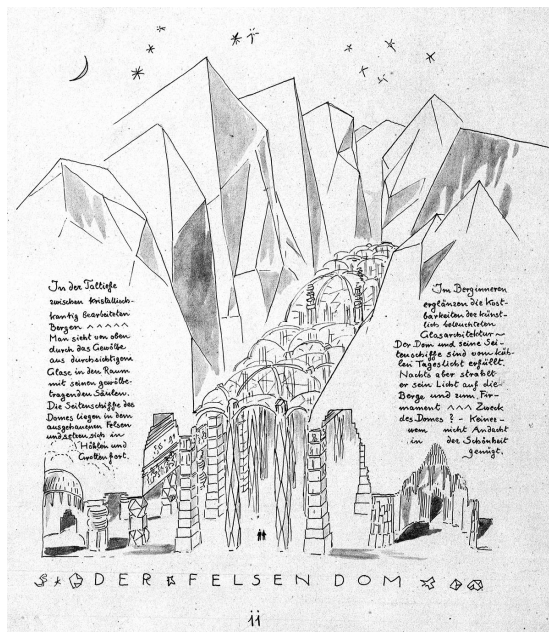
Massing Sketch



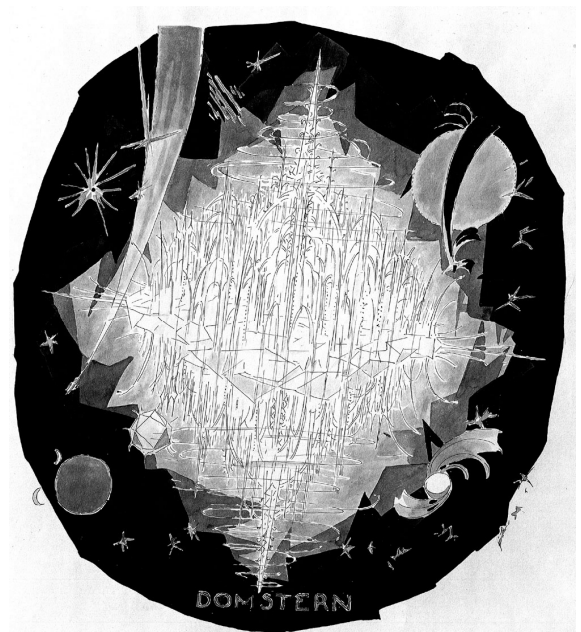
Site Plan Development

Source: Zevi (1999), 174.

Figure 08: Bruno Taut, *The Cathedral in the Rocks* and *The Cathedral Star* (1917)



(a)



(b)

Source: Taut (2004), 57 & 101.

From Building towards Landscape

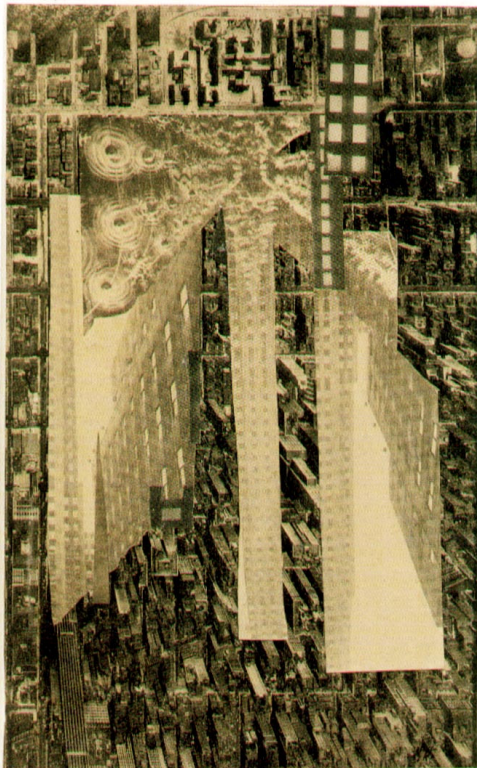
Erich Mendelsohn and a Reconstitution of Geographical Forms, 1919-1929

Figure 09: Hamilton Maxwell, Inc., *South Ferry* (n.d.)



Source: New York Public Library Digital Gallery
<http://digitalgallery.nypl.org/nypldigital/id?723203F>

Figure 10: Hannah Hoch, *New York* (1922) & Paul Citroen, *Metropolis* (1923)



(a)
Source: Boswell and Makela (1996), 41.



(b)
Source: <http://z.about.com/d/milwaukee/1/0/i/-/-/-/Citroen.jpg>

From Building towards Landscape

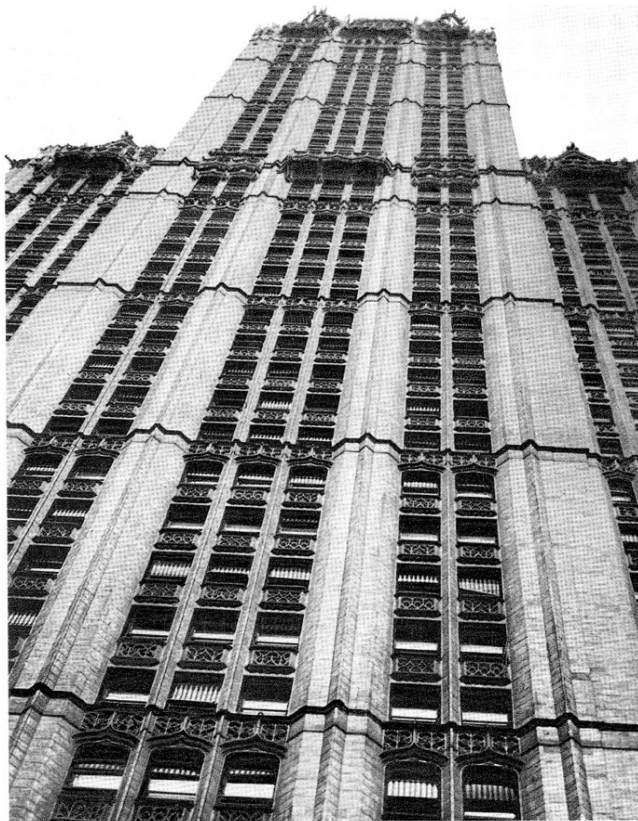
Erich Mendelsohn and a Reconstitution of Geographical Forms, 1919-1929

Figure 11: Le Corbusier and Pierre Jeanneret,
Contemporary City for Three Million Inhabitants (1922)



Source: von Moos (1982), 223.

Figure 12: Erich Mendelsohn, *Woolworth Building* (1926)

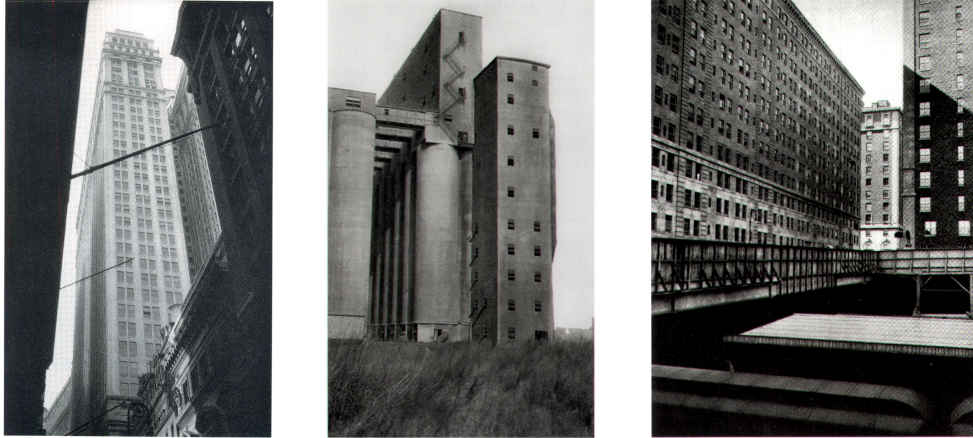


Source: Mendelsohn (1992), 99. In *Amerika's* 1928 edition, this photograph was credited to the Danish architect, K. Lonberg-Holm.

From Building towards Landscape

Erich Mendelsohn and a Reconstitution of Geographical Forms, 1919-1929

Figure 13: Erich Mendelsohn, images from *Amerika: Bilderbuch eines Architekten* (1926)



Source: Mendelsohn (1992), 17, 127, 141.

Figure 14: Erich Mendelsohn, images from *Russland Amerika Europa* (1929)



Plate 19, *Kischi – 2*

Source: Mendelsohn (1989), 47. Credited to Grabar, *Historische Architektur*.

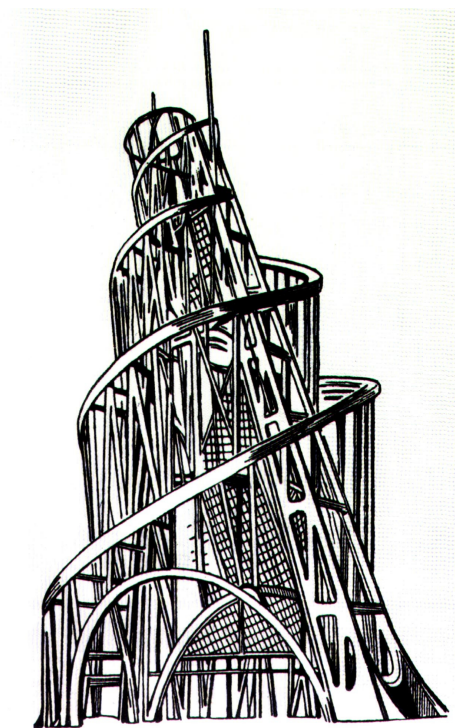


Plate 97, *Turm der Arbeit* (Vladimir Tatlin)

Mendelsohn (1989), 209. Credited to Adolf Behne, *Der Moderne Zweckbau*.

From Building towards Landscape

Erich Mendelsohn and a Reconstitution of Geographical Forms, 1919-1929

Figure 15: Erich Mendelsohn, images from *Russland Amerika Europa* (1929)



Plate 17, *Bauplatz*
Source: Mendelsohn (1989), 153



Plate 48, *Leningrad / Auferstehungskirche*
Mendelsohn (1989), 105

Figure 16: Erich Mendelsohn, image from *Russland Amerika Europa* (1929)

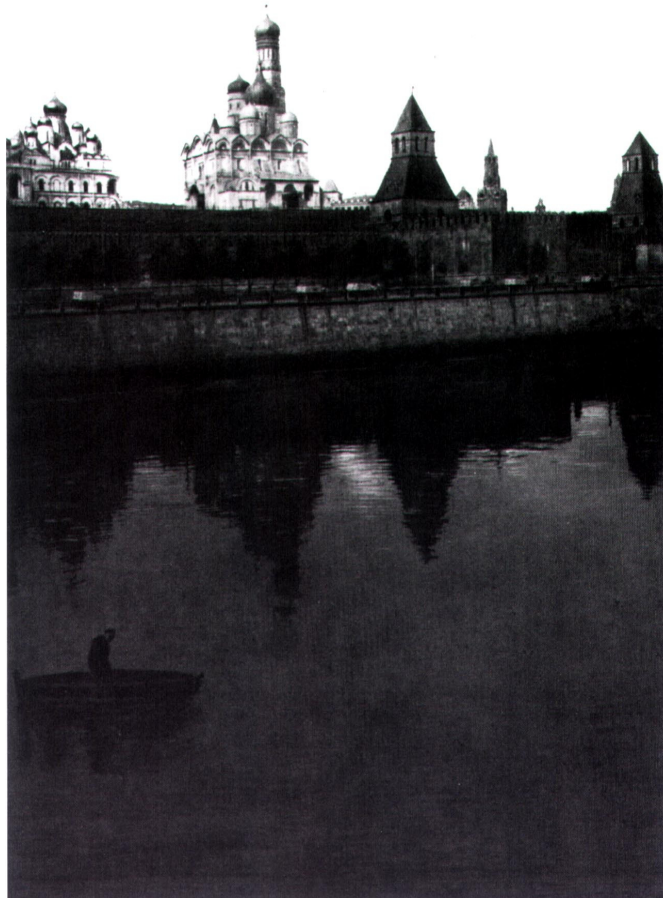
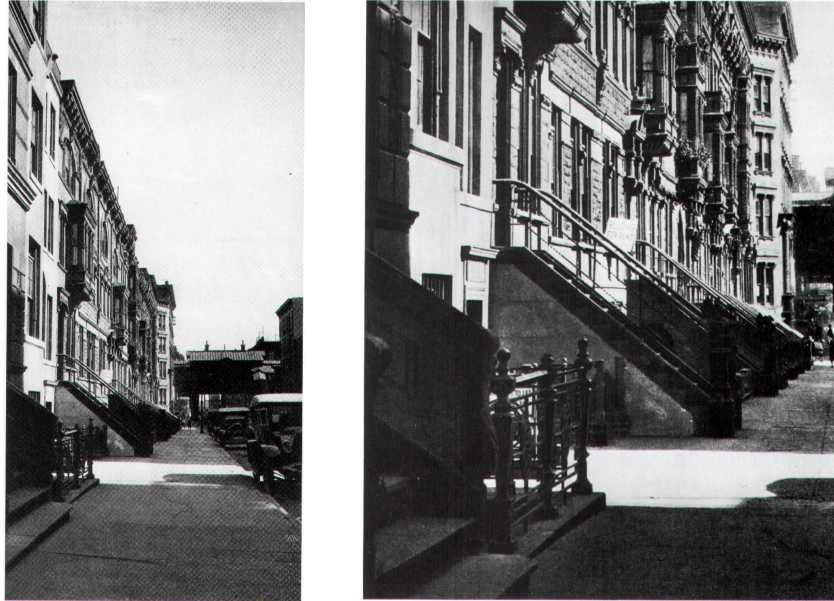


Plate 37, *Moskau – Kreml von der Moskwa aus*
Source: Mendelsohn (1989), 83

From Building towards Landscape

Erich Mendelsohn and a Reconstitution of Geographical Forms, 1919-1929

Figure 17: Erich Mendelsohn, Pictures from *Amerika* (left) and *Russland Europa Amerika* (right).



Nebenstrasse (Side Street)

Source: Mendelsohn (1992), 145; Mendelsohn (1989), 13



Buffalo -- Getreidespeicher (Grain Silo)

Source: Mendelsohn (1992), 113; Mendelsohn (1989), 19

From Building towards Landscape

Erich Mendelsohn and a Reconstitution of Geographical Forms, 1919-1929

Figure 18: Erich Mendelsohn, image from *Russland Amerika Europa* (1929)
Plate 14, *New York – vom Paramount Building zum East River*



Source: Mendelsohn (1989), 35. Credited to Sigurd Fisher.

From Building towards Landscape

Erich Mendelsohn and a Reconstitution of Geographical Forms, 1919-1929

Figure 19: Erich Mendelsohn, image from *Russland Amerika Europa* (1929)
Plate 25, *Moscow / Kolomskoje 1*



Source: Mendelsohn (1989), 59.

Figure 20: Erich Mendelsohn, image from *Russland Amerika Europa* (1929)
Plate 38, *Moscow / Lubjanka*



Source: Mendelsohn (1989), 85.

From Building towards Landscape

Erich Mendelsohn and a Reconstitution of Geographical Forms, 1919-1929

Figure 21: Erich Mendelsohn, image from *Russland Amerika Europa* (1929)
Plate 39, *Leningrad / Passage*

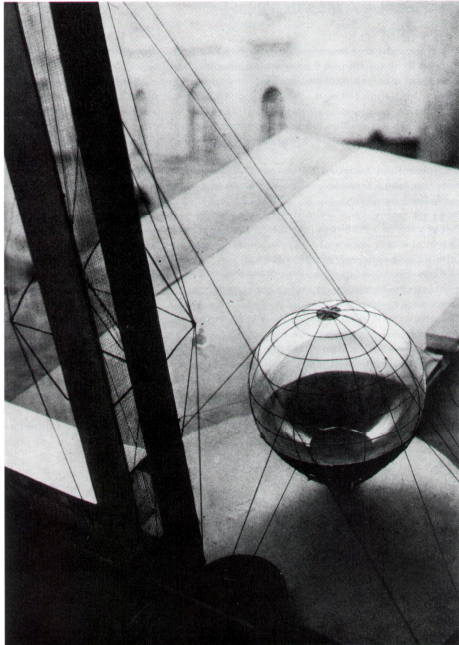


Source: Mendelsohn (1989), 87.

From Building towards Landscape

Erich Mendelsohn and a Reconstitution of Geographical Forms, 1919-1929

Figure 22: Erich Mendelsohn, image from *Russland Amerika Europa* (1929)
Plate 52, *Moskau 1927 / Projekt zum Lenininstitut*



Source: Mendelsohn (1989), 87. Credited to “Moskauer Kollegen.”

Figure 23: Erich Mendelsohn, image from *Russland Amerika Europa* (1929)
Plate 82, *Kiev / Projekt für das Zeitungsgebäude “Radjansko Selo”*

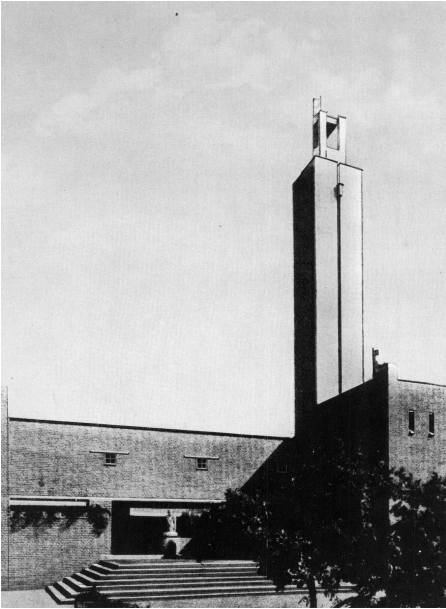


Source: Mendelsohn (1989), 177. Credited to “Moskauer Kollegen.”

From Building towards Landscape

Erich Mendelsohn and a Reconstitution of Geographical Forms, 1919-1929

Figure 24: Erich Mendelsohn, images from *Russland Amerika Europa* (1929)
Plate 96 (Haarlem Westerveld / Columbarium)
Plate 99 (New York / Medical Center 2)



Source: Mendelsohn (1989), 207.
Photograph by Erich Mendelsohn



Source: Mendelsohn (1989), 213.
Credited to Sigurd Fisher

Plate 100 (Moskau / Kuppel der Erlöserkirche)



Source: Mendelsohn (1989), 214.
Credited to Grabar, *Historische Architektur*

From Building towards Landscape

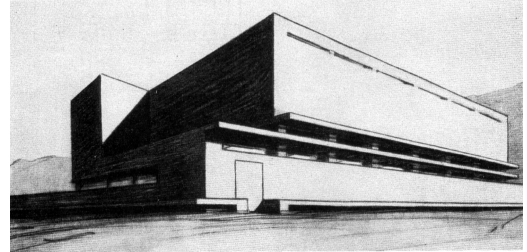
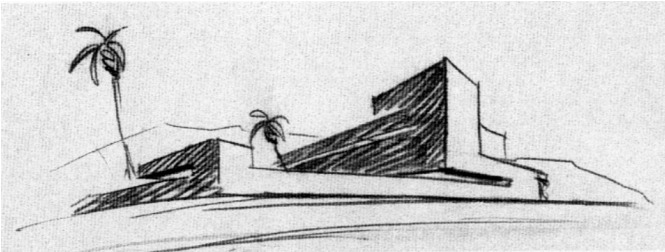
Erich Mendelsohn and a Reconstitution of Geographical Forms, 1919-1929

Figure 25: Mendelsohn, *Approach to the Wailing Wall* (1923)



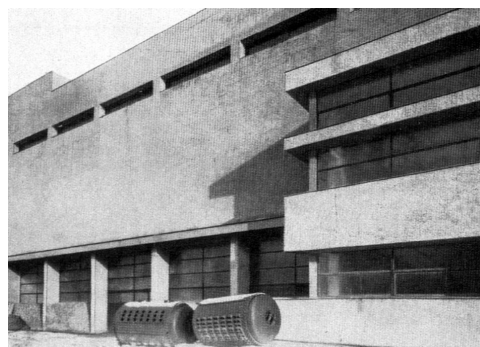
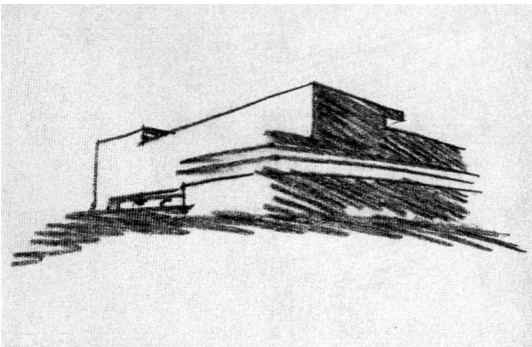
Source: Stephan (1999), 62.

Figure 26: Mendelsohn, *Electric Power Station for Haifa* (1923)



Source: Mendelsohn (1992), 94, 95.

Figure 27: Mendelsohn, *Electric Power Station for Wüstegiersdorf* (1922)

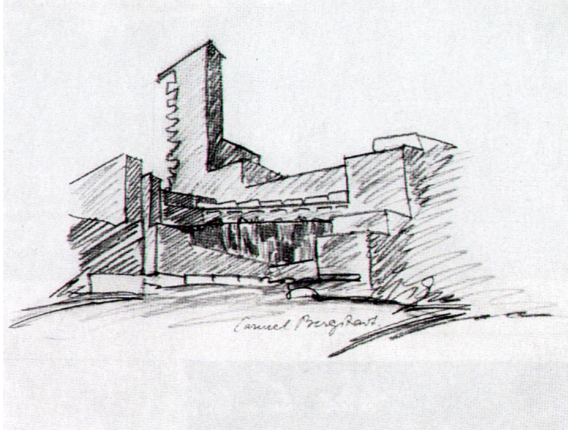


Source: Mendelsohn (1992), 90, 91.

From Building towards Landscape

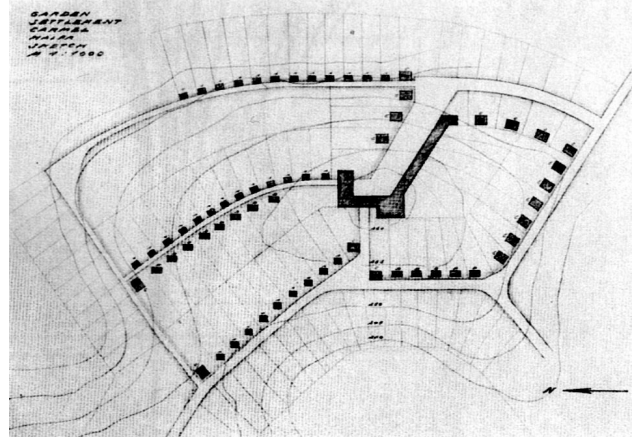
Erich Mendelsohn and a Reconstitution of Geographical Forms, 1919-1929

Figure 28: Mendelsohn, *Garden City on Mt. Carmel* (1923)



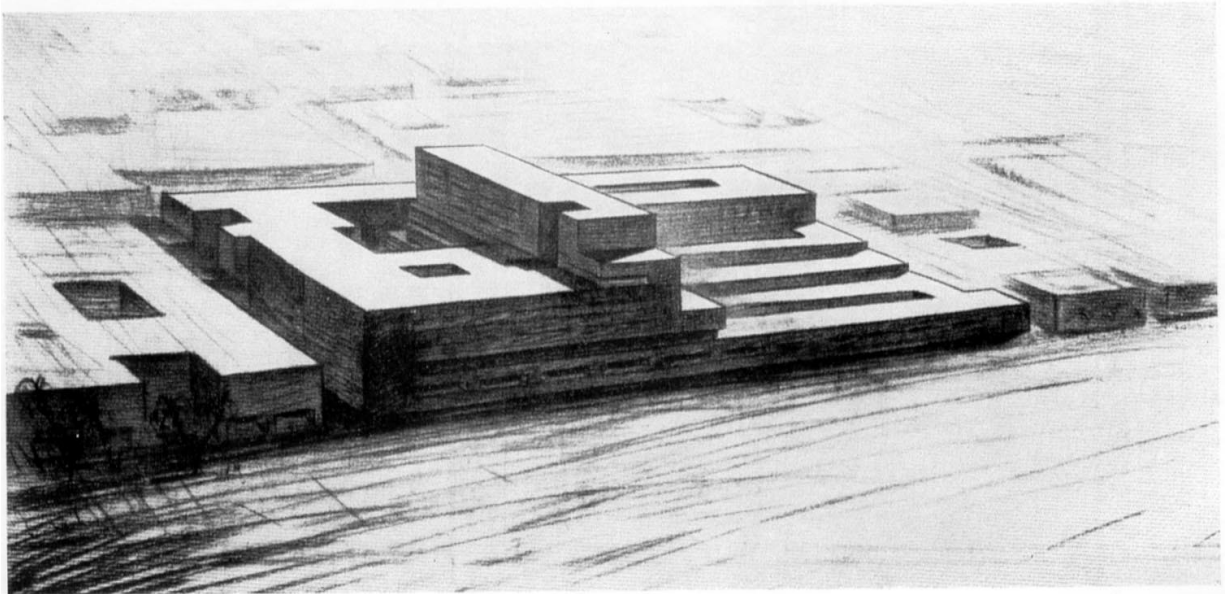
(a)

Source: Mendelsohn (1992), 100, 101



(b)

Figure 29: Mendelsohn, *Competition for a Business Center* (1923)
(in collaboration with Richard Neutra)



Source: Mendelsohn (1992), 97.